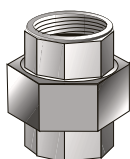


# EXIMPORT Conexões de Ferro Maleável

60135

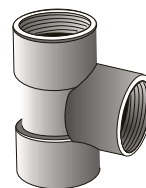
Tubos compatíveis	Aço carbono sem costura
Pressão máx. de trabalho	Até 140 bar (2.000 psi)
Vedação	Rosca

## União assento de bronze



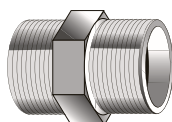
Rosca	Referência	Peso Aprox. (kg)
1/4" NPT	702.070.004	0,138
3/8" NPT	702.070.006	0,205
1/2" NPT	702.070.007	0,305
3/4" NPT	702.070.009	0,508
1" NPT	702.070.010	0,674
1.1/4" NPT	702.070.011	0,976
1.1/2" NPT	702.070.012	1,267
2" NPT	702.070.020	1,919

## Te



Rosca	Referência	Peso aprox. (kg)
1/4" NPT	702.060.004	0,118
3/8" NPT	702.060.006	0,179
1/2" NPT	702.060.007	0,285
3/4" NPT	702.060.009	0,459
1" NPT	702.060.010	0,670
1.1/4" NPT	702.060.011	1,055
1.1/2" NPT	702.060.012	1,361
2" NPT	702.060.020	2,260

## Niple duplo



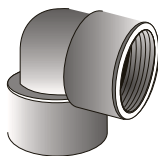
Rosca	Referência	Peso aprox. (kg)
1/4" NPT	702.001.004	0,040
3/8" NPT	702.001.006	0,043
1/2" NPT	702.001.007	0,101
3/4" NPT	702.001.009	0,134
1" NPT	702.001.010	0,249
1.1/4" NPT	702.001.011	0,381
1.1/2" NPT	702.001.012	0,481
2" NPT	702.001.020	0,769

## Luva



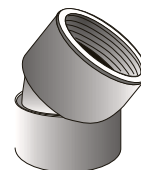
Rosca	Referência	Peso aprox. (kg)
1/4" NPT	702.045.004	0,075
3/8" NPT	702.045.006	0,112
1/2" NPT	702.045.007	0,175
3/4" NPT	702.045.009	0,278
1" NPT	702.045.010	0,423
1.1/4" NPT	702.045.011	0,681
1.1/2" NPT	702.045.012	0,836
2" NPT	702.045.020	1,444

## Cotovelo 90°



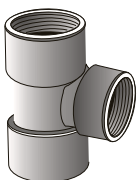
Rosca	Referência	Peso aprox. (kg)
1/4" NPT	702.015.004	0,080
3/8" NPT	702.015.006	0,128
1/2" NPT	702.015.007	0,196
3/4" NPT	702.015.009	0,312
1" NPT	702.015.010	0,512
1.1/4" NPT	702.015.011	0,761
1.1/2" NPT	702.015.012	0,999
2" NPT	702.015.020	1,582

## Cotovelo 45°



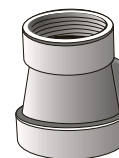
Rosca	Referência	Peso aprox. (kg)
1/4" NPT	702.025.004	0,067
3/8" NPT	702.025.006	0,116
1/2" NPT	702.025.007	0,191
3/4" NPT	702.025.009	0,282
1" NPT	702.025.010	0,451
1.1/4" NPT	702.025.011	0,695
1.1/2" NPT	702.025.012	0,947
2" NPT	702.025.020	1,382

## Te de Redução



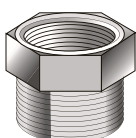
Rosca	Referência	Peso aprox. (kg)
1/2" x 1/4" NPT	702.065.074	0,232
1/2" x 3/8" NPT	702.065.076	0,248
3/4" x 3/8" NPT	702.065.096	0,347
3/4" x 1/2" NPT	702.065.097	0,385
1" x 1/2" NPT	702.065.107	0,563
1.1/4" x 3/4" NPT	702.065.119	0,852
1.1/2" x 1" NPT	702.065.121	1,138
2" x 1.1/4" NPT	702.065.211	1,265
2" x 1.1/2" NPT	702.065.212	1,907

## Luva de redução



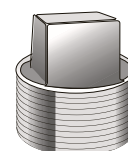
Rosca	Referência	Peso aprox. (kg)
1/2" x 1/4" NPT	702.050.074	0,126
1/2" x 3/8" NPT	702.050.076	0,140
3/4" x 3/8" NPT	702.050.096	0,186
3/4" x 1/2" NPT	702.050.097	0,214
1" x 1/2" NPT	702.050.107	0,299
1.1/4" x 3/4" NPT	702.050.119	0,478
1.1/2" x 1" NPT	702.050.121	0,654
2" x 1.1/4" NPT	702.050.211	1,065
2" x 1.1/2" NPT	702.050.212	1,138

## Bucha de redução



Rosca	Referência	Peso aprox. (kg)
1/2" x 1/4" NPT	702.002.074	0,051
1/2" x 3/8" NPT	702.002.076	0,040
3/4" x 3/8" NPT	702.002.096	0,079
3/4" x 1/2" NPT	702.002.097	0,067
1" x 1/2" NPT	702.002.107	0,143
1.1/4" x 3/4" NPT	702.002.119	0,230
1.1/2" x 1" NPT	702.002.121	0,281
2" x 1.1/4" NPT	702.002.211	0,415
2" x 1.1/2" NPT	702.002.212	0,370

## Bujão



Rosca	Referência	Peso aprox. (kg)
1/4" NPT	702.010.004	0,014
3/8" NPT	702.010.006	0,028
1/2" NPT	702.010.007	0,051
3/4" NPT	702.010.009	0,075
1" NPT	702.010.010	0,136
1.1/4" NPT	702.010.011	0,198
1.1/2" NPT	702.010.012	0,260
2" NPT	702.010.020	0,415

Sujeito a alterações sem prévio aviso.

EXIMPORT  
Rua Gen. Roberto Alves Carvalho Fº, 59  
04744-000 • São Paulo • SP • Brasil  
Fone: 55 (11) 5687-9777 • Fax: 55 (11) 5687-9421  
e-mail: vendas@eximport.com.br  
site: www.eximport.com.br

